



VP848 Rubber Ducky

MSA 124016

Call sign: **ZMU3660**

SHIP'S MANUAL & EMERGENCY RESPONSE

Contents

1. Crew Induction notes
2. Safety equipment list
3. Boat specific safe operating procedures
4. Hazard ID
5. Emergency procedures
 - 5.1. Fire Fighting
 - 5.2. Man overboard
 - 5.3. Structural breach
 - 5.4. Abandon ship
 - 5.5. Medical emergency
 - 5.6. Loss of power
 - 5.7. Loss of steering
 - 5.8. Refuelling
 - 5.9. Pollution control
6. Compass deviation card
7. Copies of charts NZ 45, NZ 46, & NZ 57

SHIP'S MANUAL & EMERGENCY RESPONSE

1997 3.7 metre inflatable

Power 11 kw

Trailer registration: 2086F

1.0 Crew Induction Notes

- All personnel (Skippers and crew) must complete an induction and fill out the vessel's induction form. (Skipper to check and sign off crew.)
- Skippers and crew must not be under the influence of alcohol or drugs.
- Crew are to listen to and abide by all lawful instruction of the vessel's skipper.
- Crew are to be shown the location and operation of the vessel's safety equipment including:
 - Flares
 - First aid kit
 - Paddles
 - EPIRP / SPOT
 - Anchor (note if not tied on)
- Crew are to be shown a copy of the ship's hazard register
- Crew are to be shown a copy of the vessel's emergency procedures
- No garbage or waste is to be thrown overboard (must all be returned to shore)
- Who to call in the event of emergency
- Keep hands and feet inside the vessel when berthing
- Ensure you have sun protection
- Ensure you have adequate food and drink for the planned work
- Ensure you have adequate clothing including wet weather gear for unexpected weather changes.
- **At all times a Personal Flotation Device (PFD) will be worn on this vessel. (If inflating, it must be auto inflating.)**

SHIP'S MANUAL & EMERGENCY RESPONSE

2.0 Safety Equipment List

Safety Equipment	Size,Qty	Where Located
Fire Extinguishers	1	2.1 kg stored in bow
Fire Buckets	1	10 litre stored in bow
Life Jackets	4	With vessel
Personal Locator Beacon (SPOT beacon)	1	Waterproof container (New 12/05/2014)
First Aid Kit (s)	1	Stored in bow (New 02/10/2014)
Flares -Smoke Floats	1	Waterproof container (expire (04/19)
Tow Line	1	Bow
Basic engine tool kit	1	Waterproof container
Spare pull cord for engine	1	Waterproof container
Hand bearing compass	1	On board
Manual Fog horn	1	On board
Throw rope	1	On board
Anchors (detail size & type)	1	Folding stored in bow
NZ Almanac	1	Hydrology Office
Charts NZ 45, NZ 46, & NZ 57	1	Hydrology office (copy on vessel when in restricted limits)
Ship's Manual	1	Boat Folder
Log Book		Boat Folder

SHIP'S MANUAL & EMERGENCY RESPONSE

3.0 Operating procedures

Weather

An assessment of weather conditions, including sea state and wind, will be made on the day. The decision of whether to proceed or cancel a day's operation remains the sole responsibility of the skipper.

Vessel Name	MNZ number	Operation	Max wind	Max waves
VP848 (Rubber Ducky)	124016	Day time	20 knots	0.5 m

*Day time operation:

Vessels not fitted with navigation lights will not be used between the hours of ½ hour before sunset, and ½ hour after sunrise.

Perform vessel safety checks, drills and complete vessel's log book

If any of the equipment listed in the safety equipment list is not on board, or has expired, the vessel shall not be launched.

Ensure there is enough fuel on board for the day's running and safe return.

Inform shore-based personnel of the following details:

- Where you are launching
- Names of those aboard
- The intended destination / activity
- ETA: When you expect to get there
- Check-in procedures during the day

During the day / while on the water, inform shore-based personnel:

- Of any issues as they occur
- Regular updates of position / check-in as previously arranged
- Changes to planned return times or destinations

During the day while on the water:

- Ensure all staff are wearing PFD's
- Keep an eye on fuel levels
- Keep an eye on engine temperature
- Keep an eye on water levels in the boat / bilge. Operate the bilge pumps as needed.

After returning to shore:

- Inform shore-based personnel that you are safely back ashore
- Inform shore-based personnel of any incidents that occurred
- Fill out log book
- Note any breakages / faults and arrange repairs as needed.

SHIP'S MANUAL & EMERGENCY RESPONSE

4.0 Vessels Hazard ID

Vessel: VP848 (Rubber Ducky)

1997, Lancer 3.7 metre inflatable

MNZ 124016

Maximum Permitted crew: 4

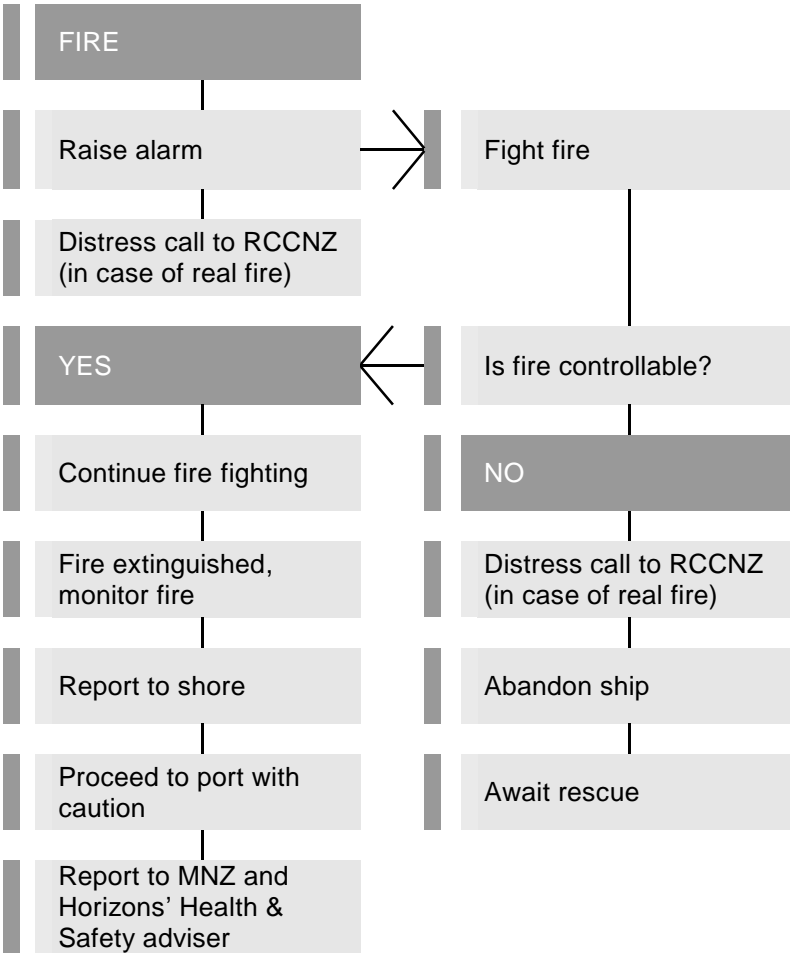
VHF call sign: ZMU3660

Trailer Registration: 2086F

Hazard	Significant		Can it be eliminated		Can it be isolated		Method of control
	Yes	No	Yes	No	Yes	No	
Fire hazard with fuel on board	✓			✓		✓	Fire extinguisher carried on board.
Prop cutting staff	✓		✓				Engine not to be running unless all crew are on board
Taking on water	✓			✓		✓	Hull checked for damage prior to outing. Check bung is in.
Lose equipment	✓			✓		✓	Correctly and securely stow all equipment
Weather	✓			✓		✓	Skipper needs to be aware of weather forecast. Winds of greater than 20 knots or sea conditions of greater than 0.5 metre should be avoided.
Engine failure		✓		✓		✓	Anchor carried. Oars carried. Communication equipment carried. Vessel serviced annually.
Running out of fuel		✓		✓		✓	Fuel levels checked prior to departure / ensure enough fuel to get home safely.
Trailer faults	✓			✓		✓	Trailer condition checked each day of use, and a WOF every 6 months
Drowning (man overboard / knocked unconscious)	✓			✓		✓	Life jackets must be worn at all times. If inflatable they must be automatic.
No navigational lights	✓		✓				Vessel is not to be used between the hours of 30 minutes before sunset and 30 minutes after sunrise.

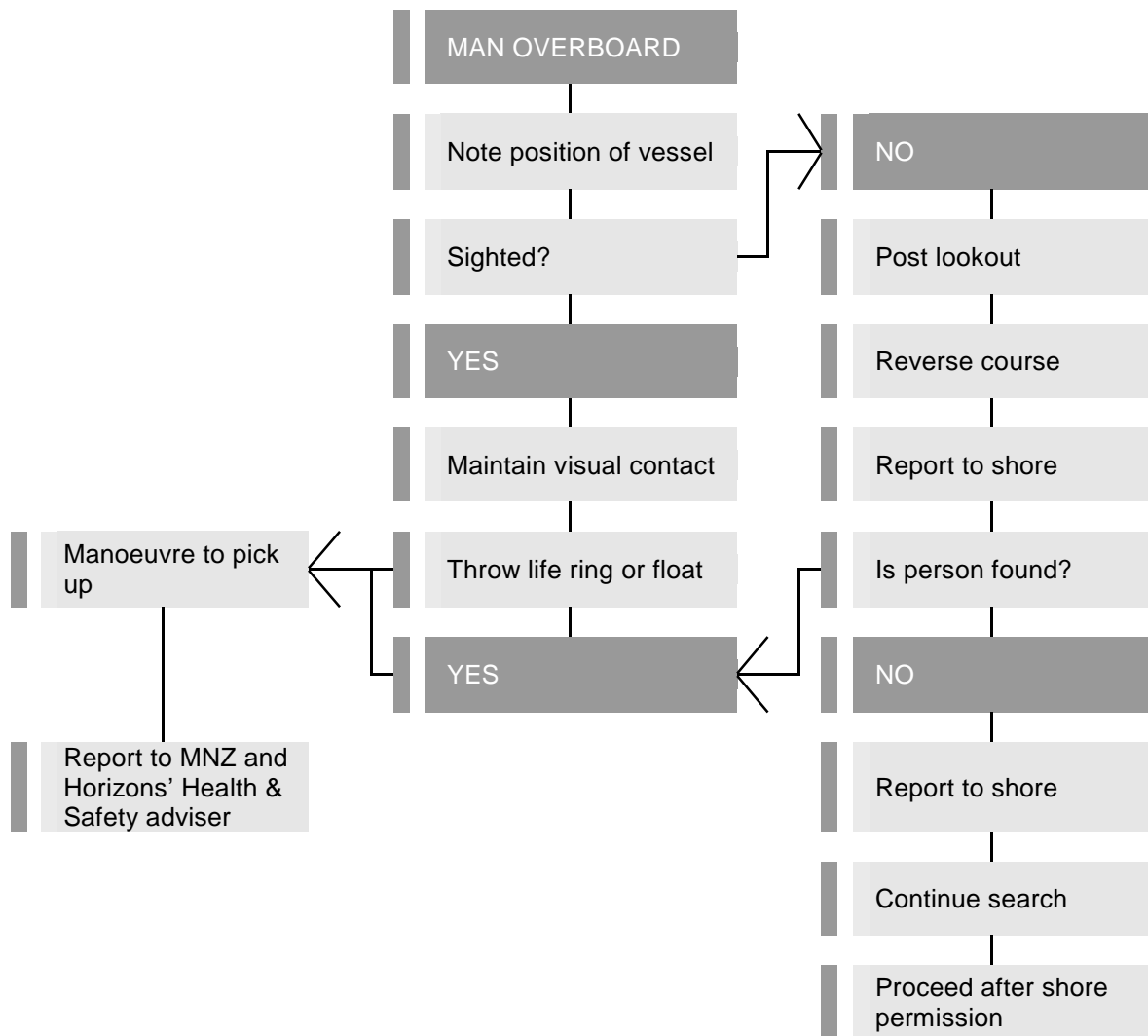
SHIP'S MANUAL & EMERGENCY RESPONSE

5.1 Emergency Response – Fire fighting Flowchart



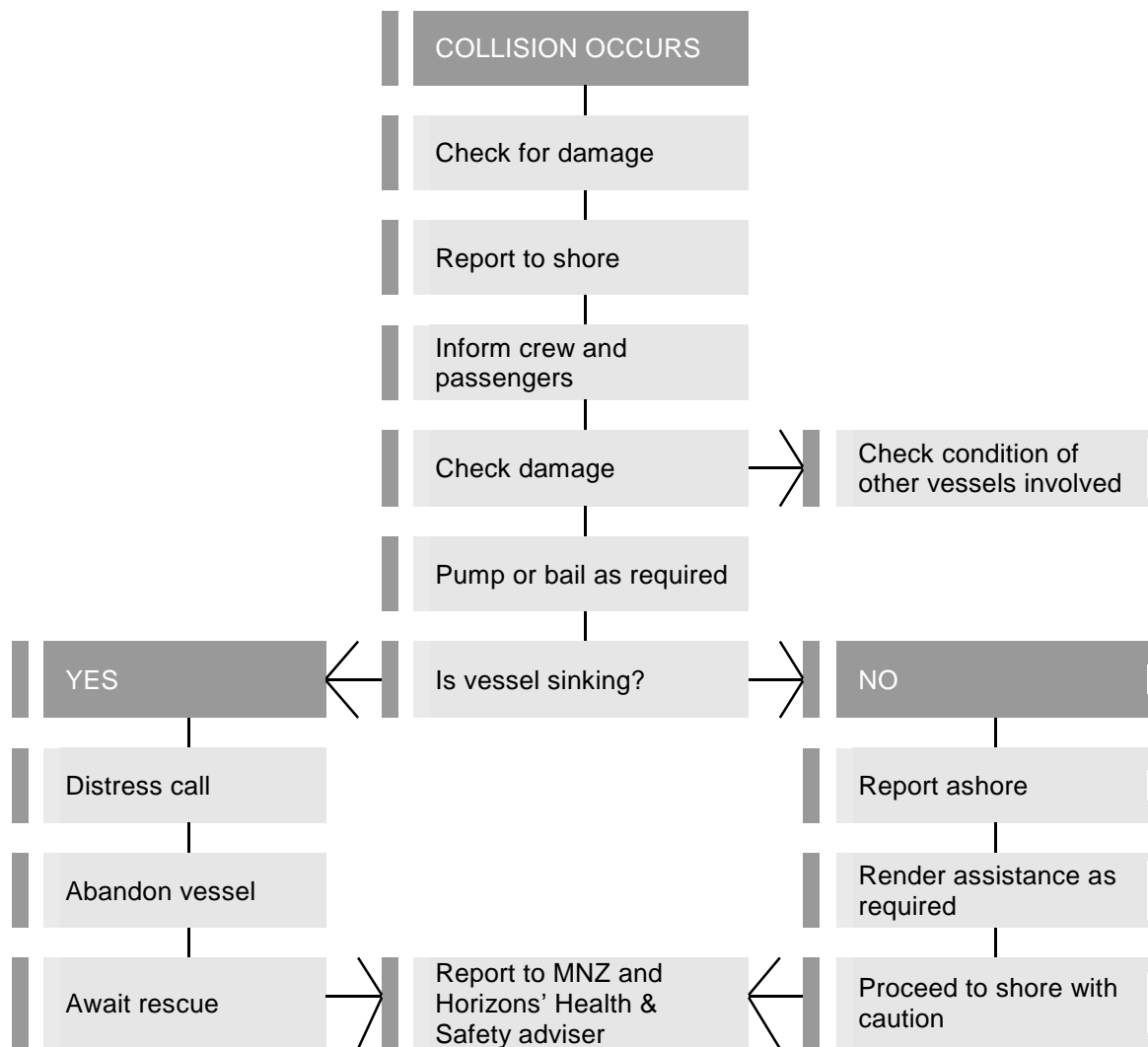
SHIP'S MANUAL & EMERGENCY RESPONSE

5.2 Emergency Response – Man overboard Flowchart



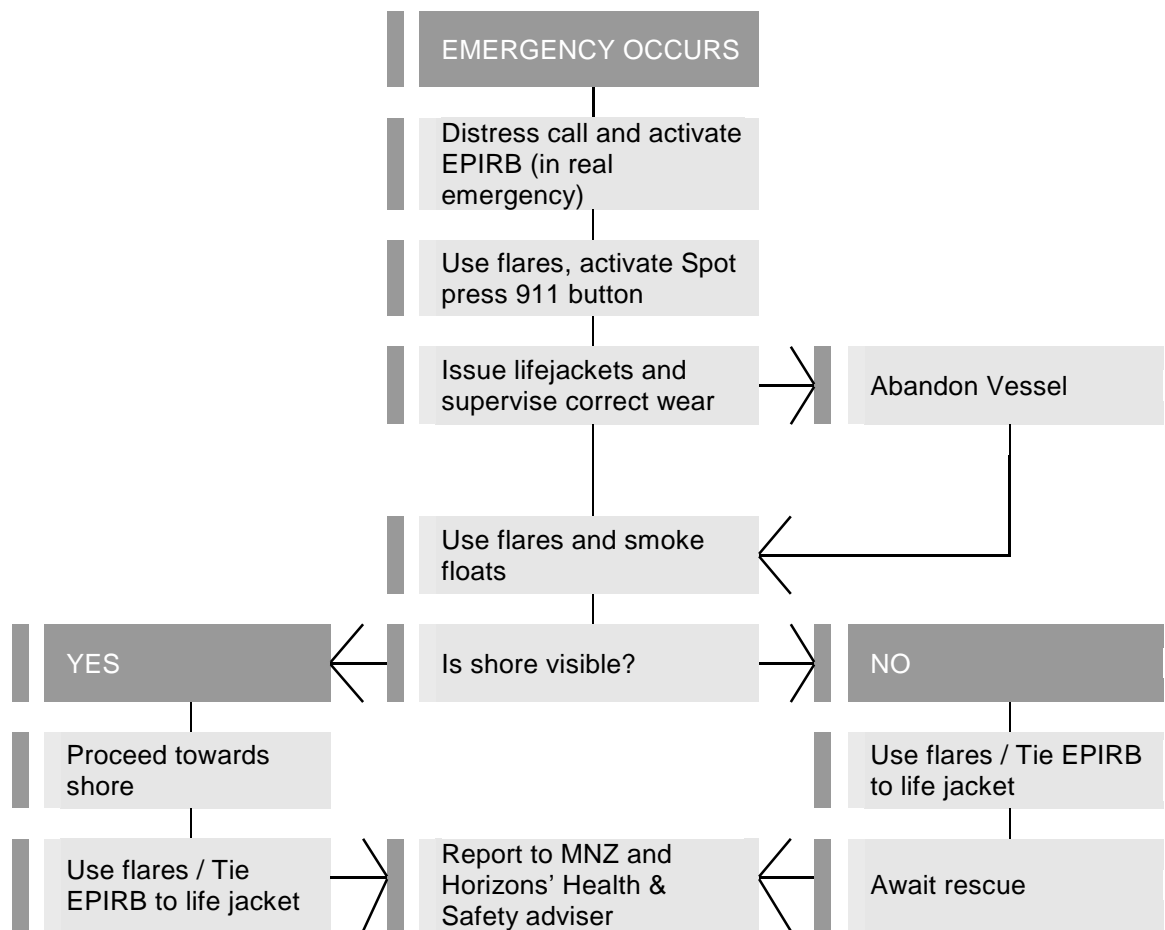
SHIP'S MANUAL & EMERGENCY RESPONSE

5.3 Emergency Response - Structural Breach or Collision Flowchart



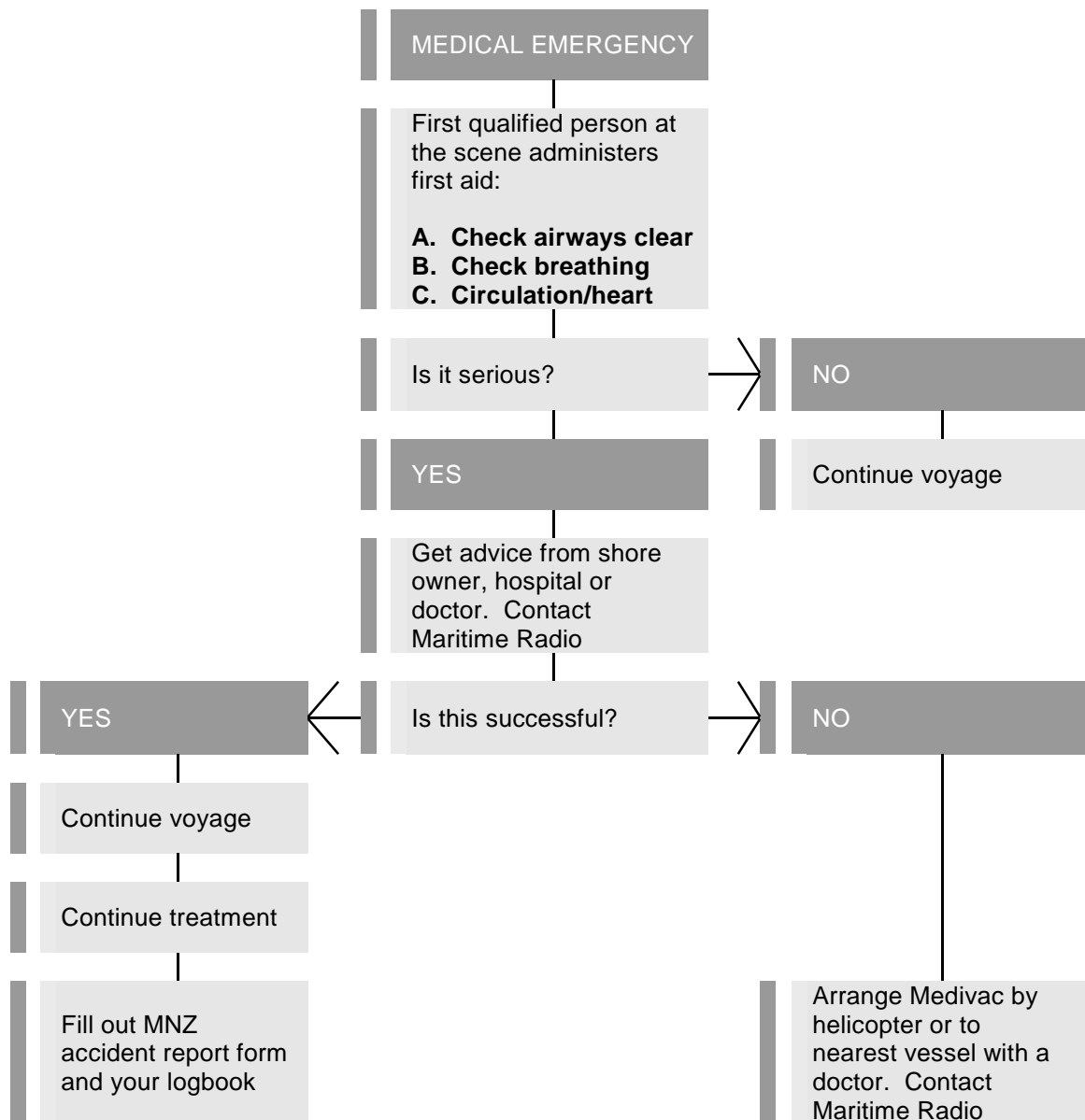
SHIP'S MANUAL & EMERGENCY RESPONSE

5.4 Emergency Response - Abandon Ship Flowchart



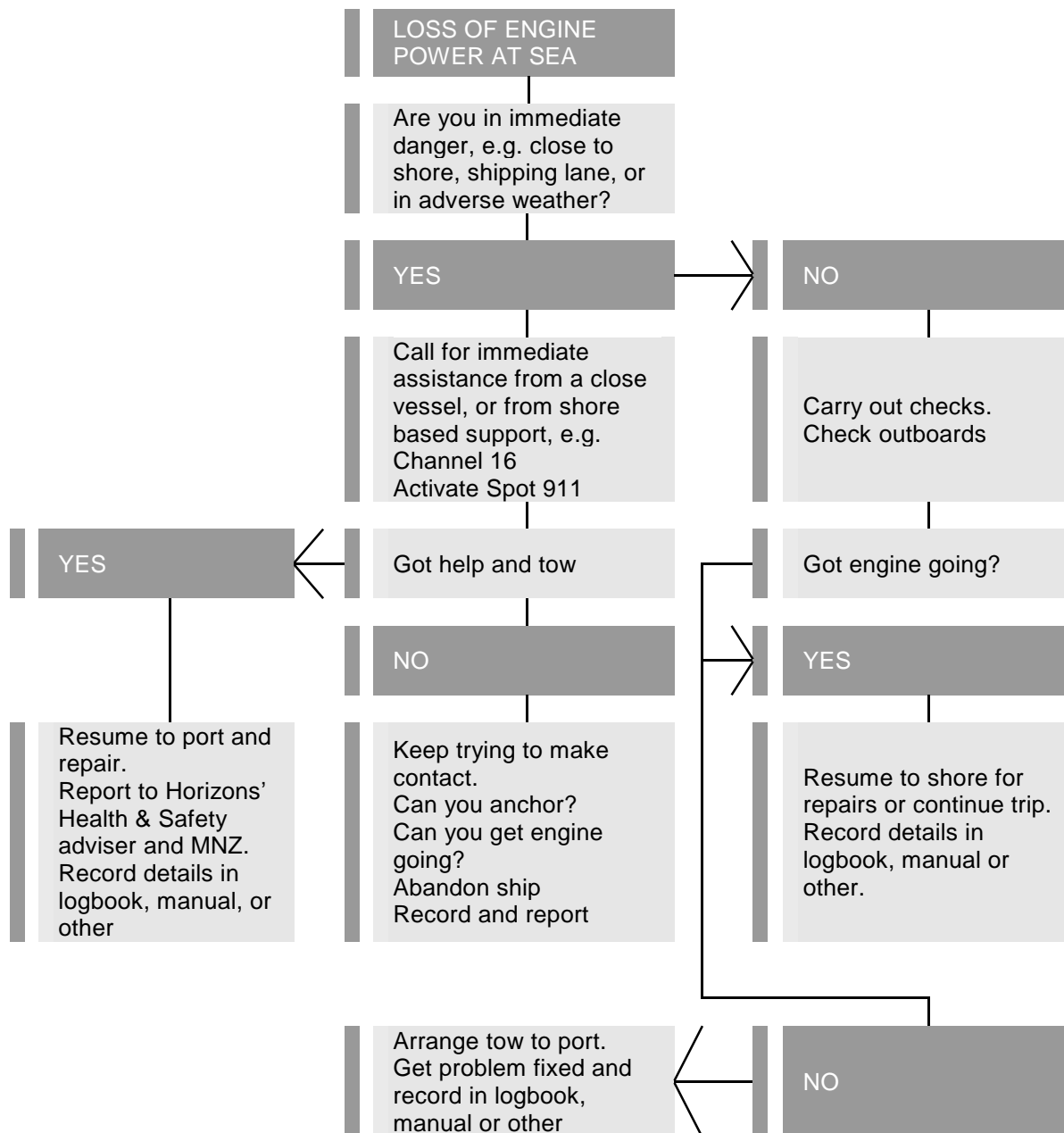
SHIP'S MANUAL & EMERGENCY RESPONSE

5.5 Emergency Response - Medical Emergency Flowchart



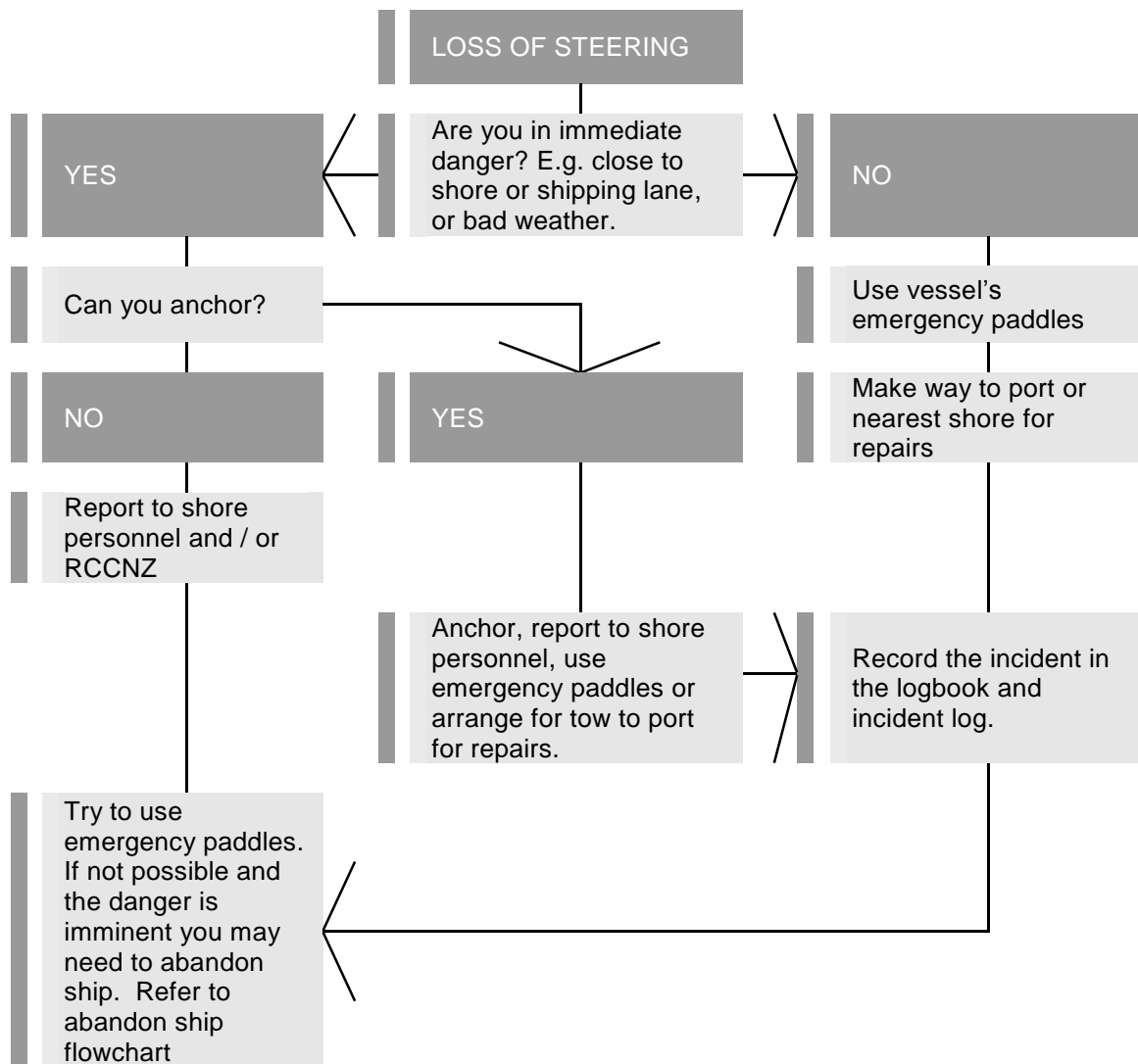
SHIP'S MANUAL & EMERGENCY RESPONSE

5.6 Emergency Response - Loss of Power at Sea Flowchart



SHIP'S MANUAL & EMERGENCY RESPONSE

5.7 Emergency Response - Loss of Steering Flowchart



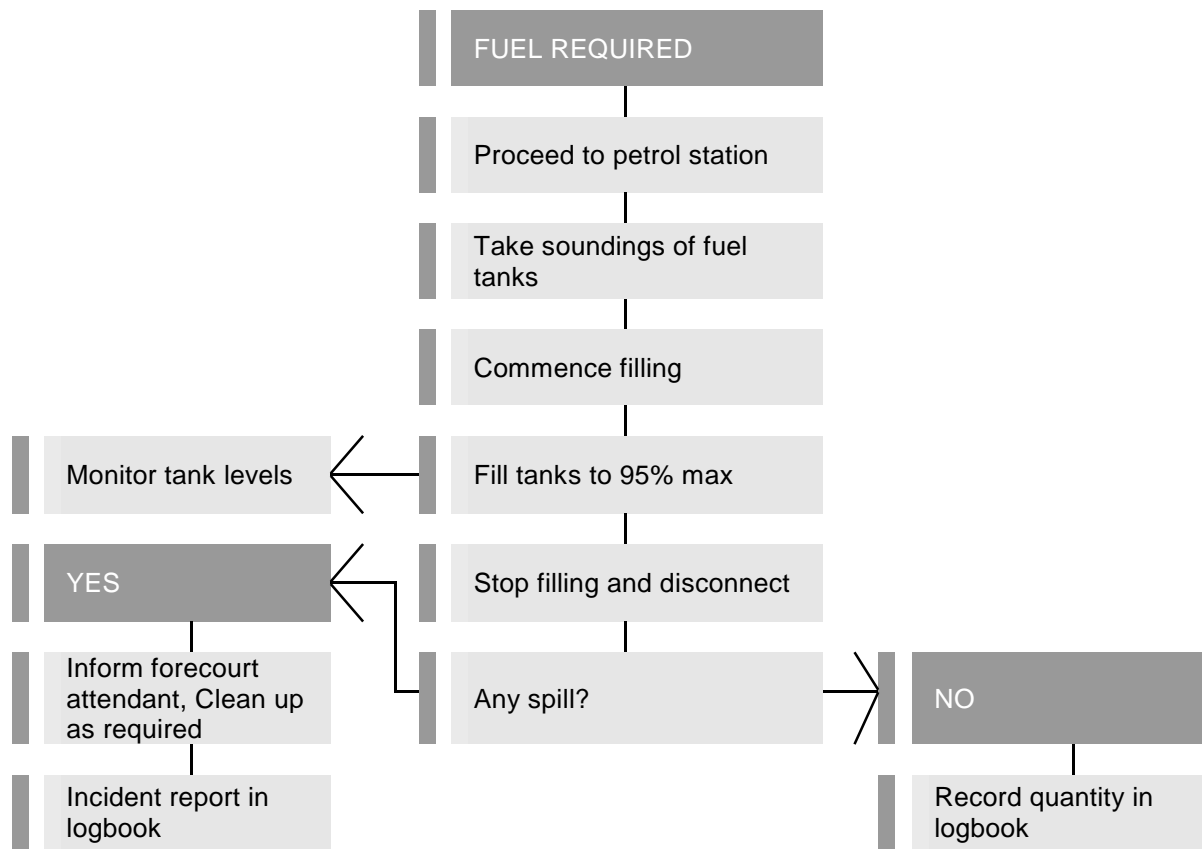
SHIP'S MANUAL & EMERGENCY RESPONSE

5.8 Fuelling Flowchart

> Flowchart and procedures table

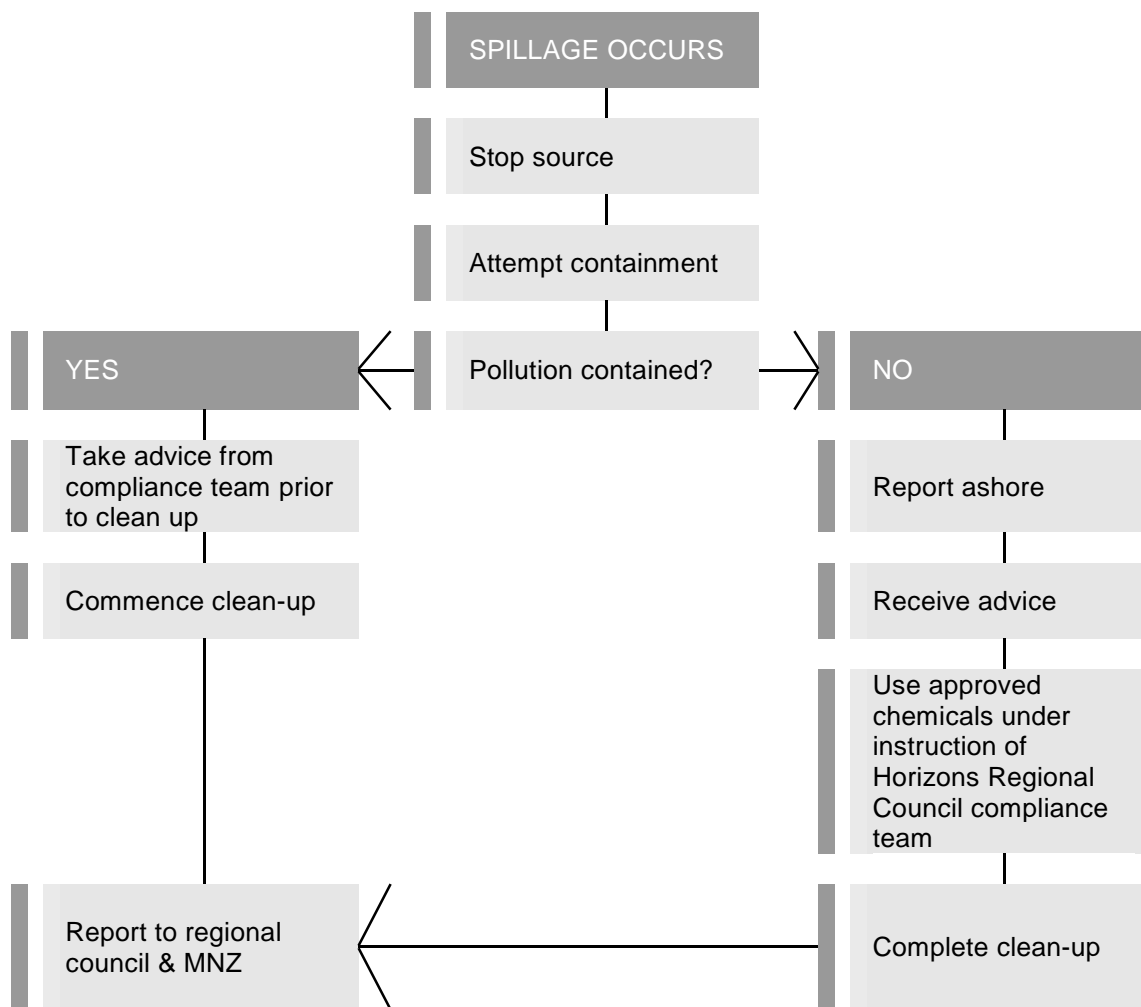
Requirements

- Trained operators only
- MNZ accident report forms
- Logbook to record details if spill



SHIP'S MANUAL & EMERGENCY RESPONSE

5.9 Pollution Control Flowchart



COMPASS DEVIATION CARD

Compass (1) error: River Rat

Orientation	Reading (Raw)	Reading (True)	Actual	Error correction
ENE	44	66	60	-6
WSW	224	246	240	-6
WNW	310	332	330	-2
ESE	132	154	150	-4
Adopted error				-5°

Compass (2) error: VP848

Orientation	Reading (Raw)	Reading (True)	Actual	Error correction
ENE	41	63	60	-3
WSW	221	243	240	-3
WNW	310	332	330	-2
ESE	131	153	150	-3
Adopted error				-3°

Compass (3) error: Te Tuna Tapu o Punahau

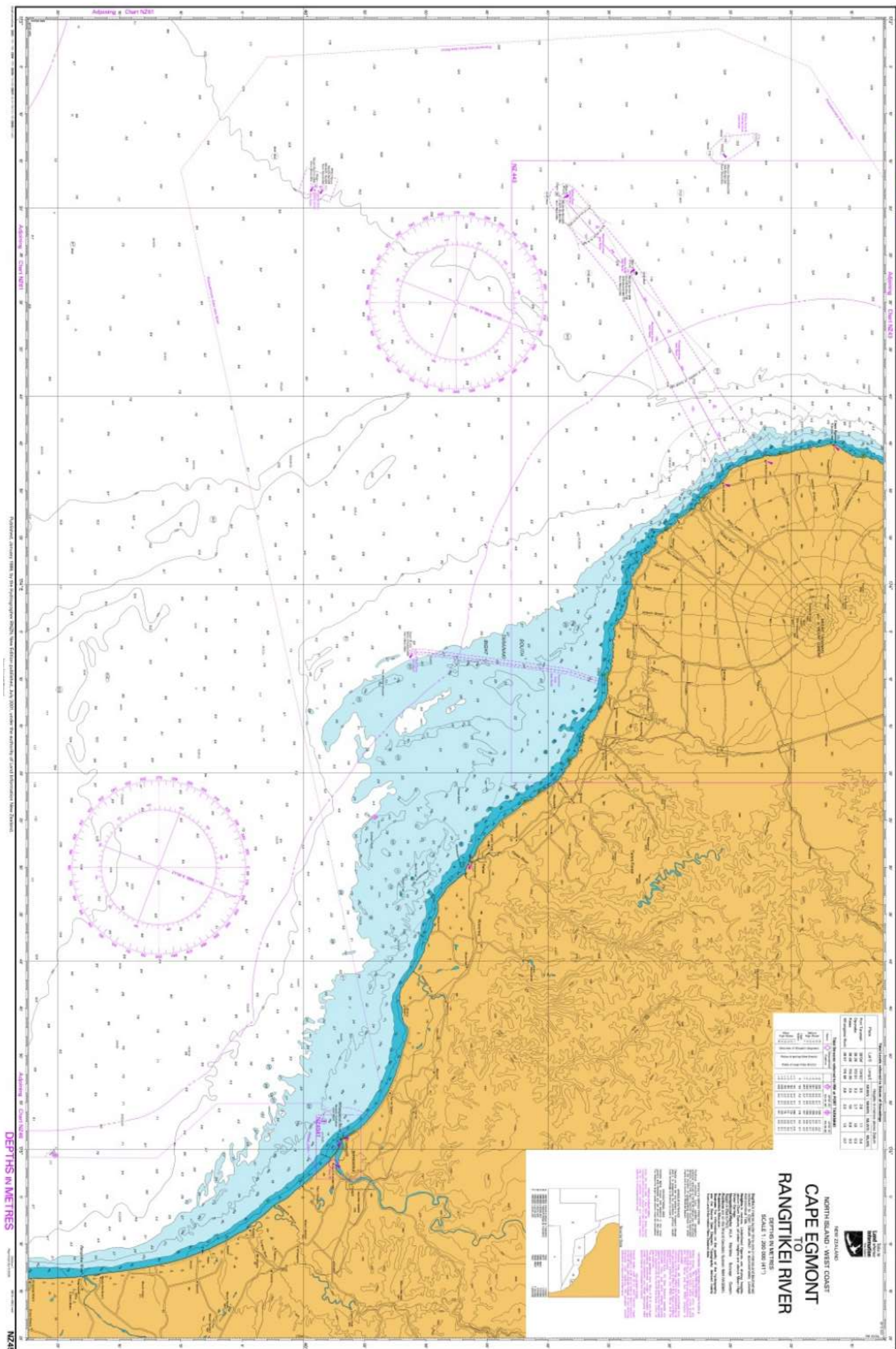
Orientation	Reading (Raw)	Reading (True)	Actual	Error correction
ENE	42	64	60	-4
WSW	222	244	240	-4
WNW	312	334	330	-4
ESE	132	154	150	-4
Adopted error				-4°

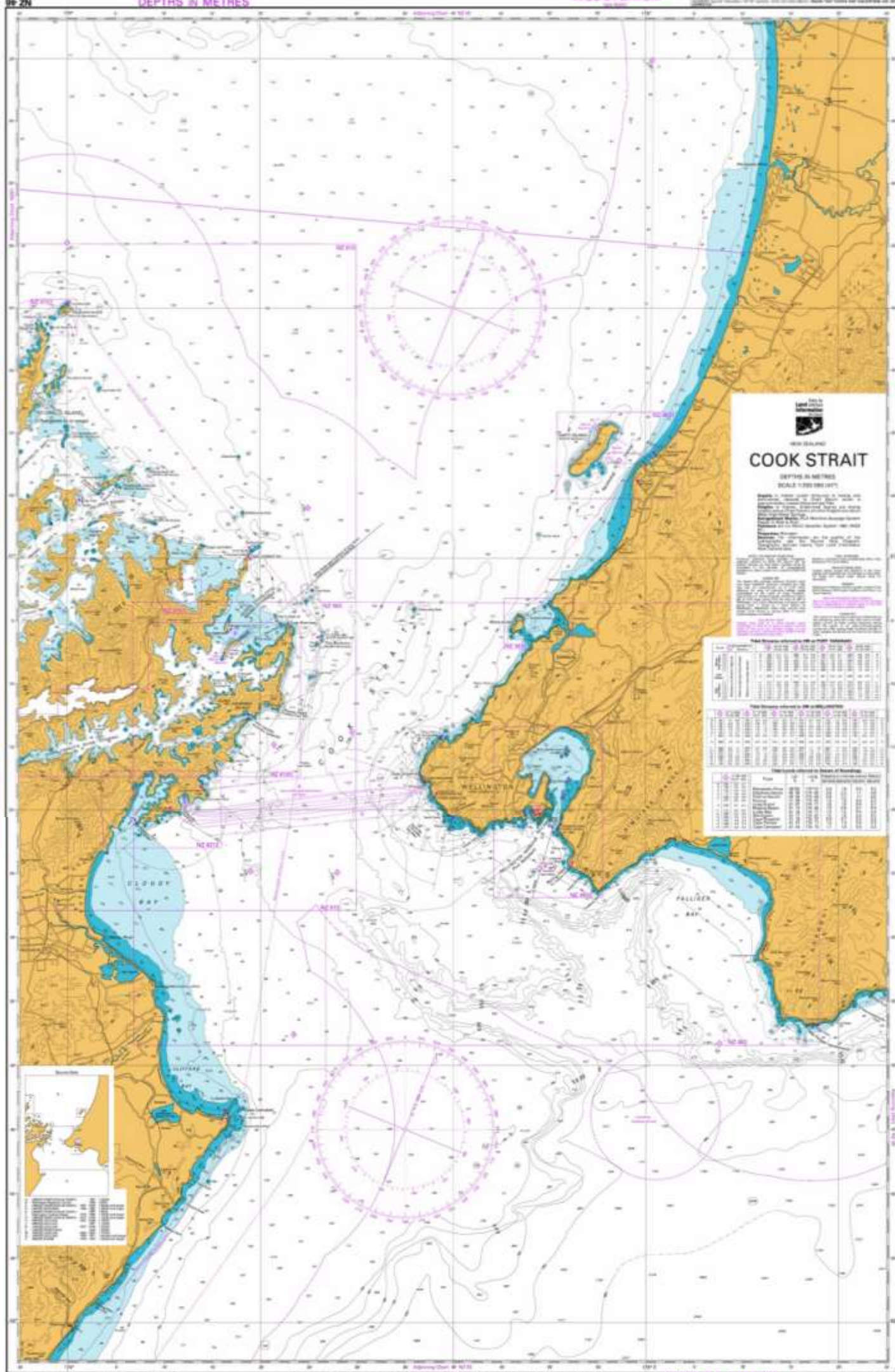
*Add the magnetic declination to read **true north**

Area	Magnetic Declination (2016)
West coast (North to South)	
Whanganui River mouth	21.56°
Rangitikei River mouth	21.81°
Palmerston North	21.90°
Manawatu River mouth	21.94°
Ohau River mouth	22.05
East Coast (North to South)	
Wainui River Mouth (Herbertville)	22.11°
Akitio River mouth	22.17°

Compass deviations calculated on 27-06-2016, by David Brown

When working in restricted enclosed limits (coast line), please refer to Nautical charts in the Hydrology office, and take a copy on the vessel.





COOK STRAIT

DEPTHS IN METRES
SCALE 1:50,000 (1971)

Published by the Hydrographic Department, New Zealand, in 1971. The chart is based on the WGS 84 datum. It shows the depths of the strait and the locations of various navigational aids. The chart is a detailed representation of the strait's geography and hydrography.

Symbol	Description	Symbol	Description
1	Light	11	Light
2	Light	12	Light
3	Light	13	Light
4	Light	14	Light
5	Light	15	Light
6	Light	16	Light
7	Light	17	Light
8	Light	18	Light
9	Light	19	Light
10	Light	20	Light

Symbol	Description	Symbol	Description
1	Light	11	Light
2	Light	12	Light
3	Light	13	Light
4	Light	14	Light
5	Light	15	Light
6	Light	16	Light
7	Light	17	Light
8	Light	18	Light
9	Light	19	Light
10	Light	20	Light

